

SANITÄR-TRAILER
GAMO

FTT 500
autark movable

SANITÄR-TRAILER
GAMO



Mobile Sanitary Solutions



QUALITY AND INNOVATION

YOUR CUSTOMERS ARE DEMANDING - AND SO SHOULD YOU BE!

For more than 40 years now, we have attached great value on the feedback and the experience of our customers - on YOU - when it comes to optimizing our vehicles. For our latest model campaign, the focus was on the use of high-quality materials and the improvement of functionality combined with an attractive appearance.

SANITARY goes high-tech - With our new self-sufficient, movable FTT 500 SANITARY TRAILER, we also line up all possible options and position an absolute novelty in the field of mobile sanitary solutions.

So, look forwards to the following pages and discovering the exceptional added value that you can profit from in future.

We are pleased to now introduce to you our new models and features.



DR. GERALD SCHÜSSEL

Management



INGO WENDLER

Management

NEW IN 2018



ENSURED SUSTAINABILITY*

The Sustainability Seal is the reward for our efforts in optimizing our products. This involves a comprehensive view of the product life cycle- from the supplier, down to recycling after as many years of possible use. In this, GAMO relies on the use of environmentally-friendly materials and energy savings through LED lamps, but also on more efficient processes and ergonomic workflows. We will continue to pursue this principle in the future, because we not only care about nature, but also about our customers and employees.

COC CERTIFICATION**

The COC Certification not only makes it easier to register vehicles in Germany, but particularly also in other European countries. It is also proof of a professionally developed, documented and well-engineered vehicle. Our new SANITARY TRAILERS** are fully certified and thus meet the highest demands.

* FTT320, FTT460, FTT460 Retro, FTT500 self-sufficient, movable, FTT610, FTD 460
** FTT320, FTT460, FTT500 self-sufficient, movable, FTT610

4

OPTIMIZATION

The objective of the model campaign was to optimize existing models through further development and by using higher-quality materials.



5

ADVANTAGES

Find out how the new restroom trailers make your daily work easier and how you can benefit in the future.



6-13

MODELS

Seven different models offer a wide range of equipment variations.



14

ACCESSORIES

Upgrade your restroom trailer with a lifting station or make it an eye-catcher and advertising platform with exterior labelling.

15

FAQs

Profit from valuable tips for trailer handling and event organization.



VIRTUAL TOUR

Discover the diversity of SANITARY TRAILERS, realistic and from at home with our virtual tours.

TIP: Explore the trailers in virtual reality with VR glasses on your smartphone.



OPTIMIZATION



SOLID-SURFACE WORKTOP

The all-new, water-resistant solid-surface worktops and panels allow for modern and pleasing design and processing variants. Individual cut-out variants are available upon request.



SOLID PLASTIC FLOORING

The new solid plastic flooring weighs less, is more sturdy and rigid, and comes with a specially, own-developed anti-slip coating. The rot-free, recyclable material also has the advantage that water cannot affect the flooring in case the surface is damaged.



STAINLESS STEEL

The quality of details has been further increased – Steps, covers, fittings, locks, handles and holders are all designed in stainless steel, ensuring an attractive appearance along with a significantly longer service life.



SAFETY

The new trailers now also feature emergency power supply and lighting*. In case of a power failure, safe exiting of the trailer is enabled, with reduced liability risks for trailer operators and event organizers. No head lamps necessary any more.



FRAME CONSTRUCTION

The most massive improvements are not visible on first sight. By re-engineering the frame construction, increased stability with improved driving characteristics were achieved.



LED LIGHTING SYSTEM

The new LED lighting systems provide for uniform light in the vehicles. Optionally available indirect LED lighting** perfectly supplements the flair.

* Optionally available for the service area
** Washbasin and shelf lighting

.....

BENEFIT FROM OUR SUITABILITY FOR EVERYDAY USE:

- 01.** Integrated, folding GAMO safety step made of sturdy stainless steel with anti-slip coating and low step height
- 02.** Water-resistant and easy-to-clean interior
- 03.** Flexibly fastened privacy panels provide privacy
- 04.** Energy-optimized LED lighting system on the ceiling and optionally above the urinals also serve as emergency and service lighting



EASY TO MANEUVER

Events and activities at times have a problem with limited space. In such situations, simple and easy set-up of the restroom vehicles is of great importance. GAMO's restroom vehicles are easy to move and maneuver. Four pre-installed maneuvering handles provide for a secure grip at any corner. The vehicle chassis can even be maneuvered on the spot with little effort, enabling positioning in even the "tightest" spaces.

ADVANTAGES



MODELS



standard	standard
upgraded standard (surcharge)	upgraded standard (surcharge)

Other color variants available upon request.*

GAMO's SANITARY TRAILERS are presented in new, attractive decors. Apart from the fresh apple green, bold orange is now available as standard. Other colors, such as the classic blue or red, along with many decor variants, are optionally available at an additional charge. Seven different models offer a wide range of sizes and

equipment variations to suit every purpose. In addition to the eye-catching retro version, trailers for persons with mobility problems as well as shower trailers round off the product range. Different decors and attractive adhesive labels turn your restroom vehicle into a real eye-catcher.

* According to sample card

SANITARY TRAILER 460 Retro

Tip: RGB LED effect lighting with color controllers



- Striking appearance
- Optionally with illuminated roof display

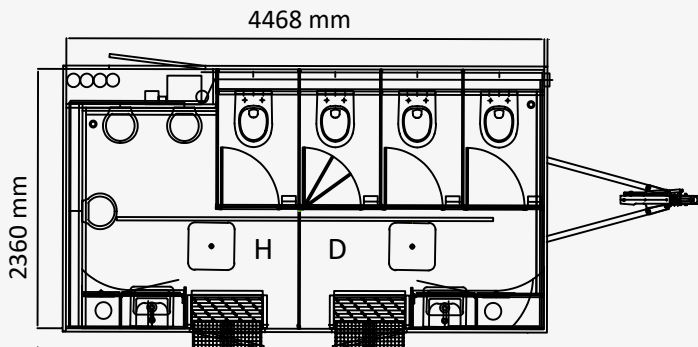


Standard decor:
cashmere gray /
stucco black

Our Eye-catcher

A unique RETRO-look - combined with stylish materials and the latest technology. This innovative SANITARY TRAILER is guaranteed to attract attention at any event. With the well-visible and illuminated roof display*, event visitors can spot the mobile restroom from far away. Stylish indirect LED effect lighting elements* above the washbasin and underneath the shelf create a special flair.

Model	Urinals	Seated toilets	Single-axle, braked	Interior dimensions L x W x H in mm	Outer dimensions L x W x H in mm
FTT 460 Retro	3	4 (3/1)	1.600 kg	4470 x 2360 x 2180	6100 x 2550 x 2960

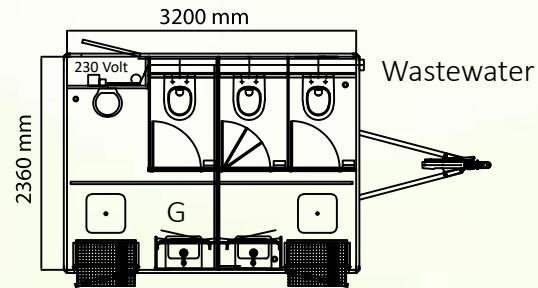


RGB LED effect lighting*

* Optionally available



FTT 320

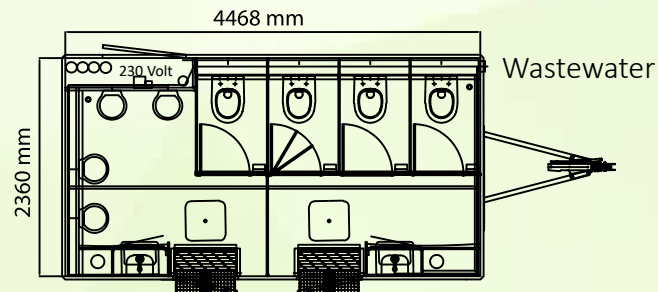


Compact: Thanks to the optimal interior space utilization, the FTT 320 is the ideal solution for smaller events.

- 2 ladies stalls with toilet
- 1 gents stall with toilet
- 1 water-free urinal
- One hygienic area each



FTT 460

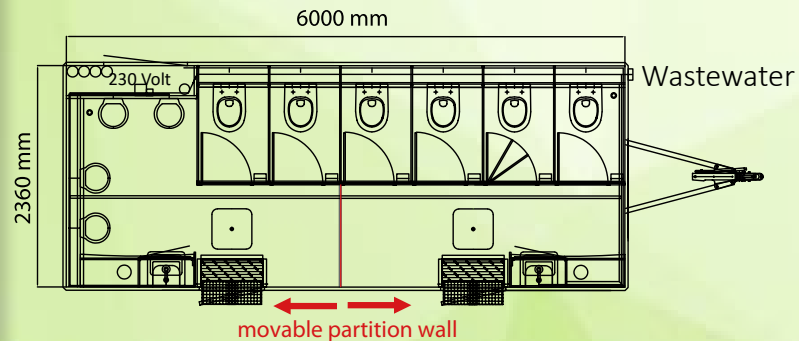


Efficient: With a small set-up surface and its high-capacity layout, the FTT 460 is perfectly suited for mid-sized events with 300-500 persons.

- 3 ladies stalls with toilet
- 1 gents stall with toilet
- 4 urinals (with water or water-free)
- One hygienic area each



FTT 610



Flexible: The “new big one” is highly efficient, yet still comfortable to drive and maneuver. A movable partition wall enables flexible arrangement for Ladies/Gents.

- 5/4 ladies stalls with toilet
- 1/2 gents stalls with toilet
- 4 urinals (with water or water-free)
- One hygienic area each

SANITARY TRAILER FTT 320, 460, 610

Tip: Optionally available with LED emergency lighting

Model	EA braked	Interior dimensions L x W x H in mm	Outer dimensions L x W x H in mm
FTT 320	1.350 kg	3200 x 2360 x 2200	4820 x 2550 x 3000



Model	EA braked	Interior dimensions L x W x H in mm	Outer dimensions L x W x H in mm
FTT 460	1.600 kg	4468 x 2360 x 2200	6100 x 2550 x 3000



Model	EA braked	Interior dimensions L x W x H in mm	Outer dimensions L x W x H in mm
FTT 610	1.800 kg	6000 x 2360 x 2200	7650 x 2550 x 3000



The Classics

Tried and tested for years - optimized and in a new design, our classics are available in the sizes 320, 460 and 610.

- Towable by car
- Easy to handle
- Robust and durable
- Modern design



LED FLUSH-ACTUATION
Vandal-proof and made of durable stainless steel with LED lighting



AUDIO SYSTEM
integrated audio system with waterproof loud-speaker system



Jets™ VACUUM SYSTEM
Energy-efficient vacuum system for reliable sewage removal



ELECTRONICALLY-CONTROLLED SYSTEM
Monitoring of the operating condition on site via touch screen or mobile via APP*** through integrated LTE module****



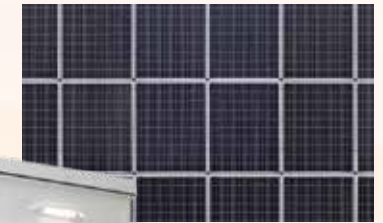
SERVICE AREA
Maintenance-friendly service area with independent (emergency) lighting



VENTILATION
Automatically controlled ventilation for improved air comfort



OVERRUN UNIT*
Optionally available with V-hitch or overrun unit* with exchangeable drawbar eye**



SOLAR PANELS*
Increases the operating time

* optionally available
** Different drawbar eyes possible to European Standard
*** Available as of 3. quarter 2018
**** Europe

SANITARY TRAILER FTT 500 autark movable

Our objective: Your added value

Plan your day efficiently, in interaction with your SANITARY TRAILER:



- Reduce your service expenditure to a minimum: Save unnecessary inspection trips and check the operating conditions of your restroom trailer from now on comfortably and easily from home.
- Use the integrated monitoring function for immediate notification in case of malfunctions, and to prevent possible downtime or outage.
- Profit from maximum set-up-location through an own power supply.
- Save the cost-intensive use of disposal vehicles.

2 Versions - One objective

This is the motto of the new FTT 500 autark movable/+ in two different equipment variants with up to 1.000 flushes each.

FTT 500 am

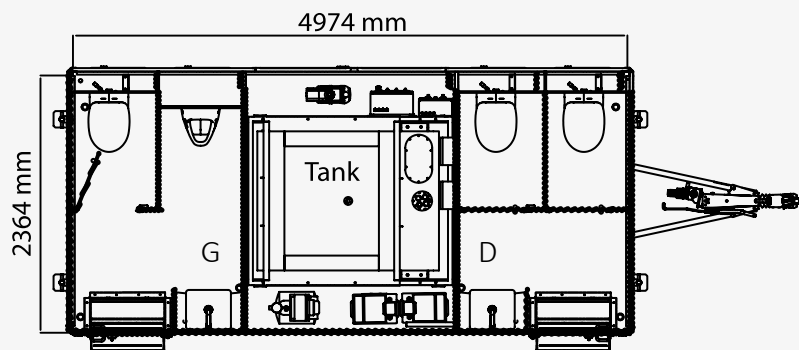
- Requires continuous power supply (generator/ voltage connection)
- Temperature-controlled ventilation system in the service room

FTT 500 am +

- Fully self-sufficient hybrid system
- Temperature-controlled ventilation system in the sanitary and service room
- Integrated access system

Imagine an intelligent restroom vehicle that interacts with you and monitors the conditions of the freshwater and blackwater tanks, responds immediately in the event of malfunctions, and controls the access system. That automatically transmits the operating condition to you in real time, provides you with light during set up and dismantling, and all this completely autonomously. Imagine you could transport your restroom vehicle in filled condition, and thus save the cost-intensive deployment of a disposal vehicle. **Wouldn't that be an innovation?**

Model	Urinals	Seated toilets	TA braked	Interior dimensions L x W x H in mm	Outer dimensions L x W x H in mm
FTT 500 am (+)	1	3 (2/1)	3,500	4974 x 2364 x 2200	6590 x 2455 x 2960



Access system with touch function*

* Standard for the FTT 500 self-sufficient, movable +11
 ** Available as of 3.

SANITARY TRAILER FTT 390 Handicap



+ 2 toilet stalls at the rear



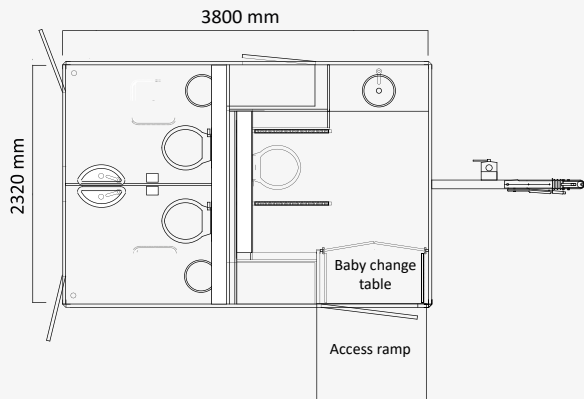
- Emergency button with acoustic and optical signal
- Wheelchair-accessible wash basin
- Baby change table



Handicap

This restroom trailer includes a handicap toilet cubicle with a functional hygienic area. Apart from the provided sanitary solution for people with impaired mobility, the trailer rear accommodates two additional, separate toilet stalls with a seated toilet and a urinal* each.

Model	Urinal*	Seated toilets	Single-axle, braked	Interior dimensions L x W x H in mm	Outer dimensions L x W x H in mm
FTT 390 Handicap	0/1/2	2 + 1	1.500 kg	3800 x 2320 x 2300	5500 x 2400 x 2800



Fold-out access ramp

* Optional equipment: Choose between one, two or no urinals

SANITARY TRAILER FTD 460



- Frost detector
- Hair dryer

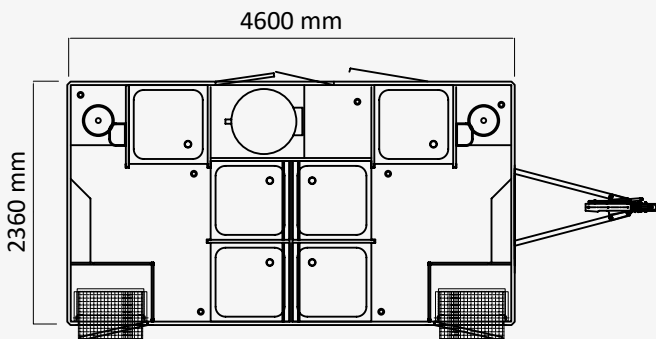


Ideal for:
Sporting events, open-air concerts, back-stage areas, film sets, trade fairs, etc.

Mobile Shower Enjoyment

The FTD 460 shower trailer is ideally suited for any type of event and convinces through its high practicality. The hot water is produced through the integrated hot-water boiler. Attractive decors in the interior provide for a pleasant atmosphere.

Model	Showers	Single-axle, braked	Interior dimensions L x W x H in mm	Outer dimensions L x W x H in mm
FTD 460	6 (3/3)	1.600 kg	4600 x 2360 x 2200	6100 x 2550 x 3000



Accessories

Lifting Station 90/150 Liters

Maceration pump for convenient disposal of waste water and solids.

-
- Ideal for:
- Discharging wastewater into wastewater tanks
 - Covering large distances in terrain without direct access to a sewage canal
 - Reducing solid matter
-



Tip: With wastewater tank usable as a self-contained solution

Practical: Compact and easy to transport (35/40 kg)

Voltage is supplied within the vehicles.

A submergible pump draws off the wastewater with the reduced solid matter.



The powerful grinding/cutting mechanism reduces solid matter in seconds.



Adhesive Label Service

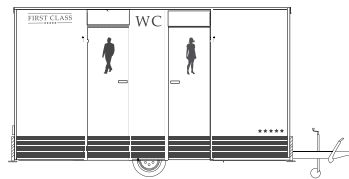
Your vehicle should represent your company, serve as advertising space and be strikingly different? We'll handle the complete adhesive labelling for you – providing the complete organization from a single source, ready for service.

Our labelling samples:

Variant 1
"Classic"



Variant 2
"Shutter effect"
retro



Variant 3
"Ice"



Variant 4
"Retro" for the FTT 460



Additional labelling variants upon request. You require an individual design? We'll be happy to handle the design and labelling for you.

How do I plan correctly?

When planning your event, make sure to contact the Regulatory Office of your municipality/venue location. Here, you can be sure to receive information.

GAMO recommends*:

300 persons	1 restroom trailer
500 persons	1-2 restroom trailers
1000 persons	2-3 restroom trailers
1500 persons	3-4 restroom trailers
2500 persons	5-6 restroom trailers
5000 persons	at least 10 restroom trailers
10000 persons	at least 20 restroom trailers

How do I transport the trailers?

All restroom trailers are equipped with a ball-shaped coupling with standardized 13-pole trailer plug and can be towed with a suitable towing vehicle.

How is the wastewater handled?

The wastewater is discharged directly into the sewer via a 110 HT-pipe outlet. You need to inquire beforehand where you can discharge into the sewer system and possibly obtain a permit (not required when using the FTT 500 am/+).

The fresh water is connected via GEKA coupling in the trailer service room.

Which power supply do I need?

Depending on trailer outfit variant, you need between a 230 V CEE power connection for the base version and up to three 230 V CEE power connections for optional equipment**, such as the lighting and heating system in the cold season. Additionally, the FTT 500 self-sufficient, movable/+ is also equipped with a 400 volt CEE electrical connection as well as a special power generator connection.

How can I clean the trailer?

The restroom trailers are all equipped with water-resistant interior fittings that are easily cleaned with a water hose and brush. The SANITARY TRAILERS can be cleaned using generally applicable standard cleaning agents. Should you want to use special cleaning agents, please do not hesitate to contact us.

* Based on the FTT610, deviations possible acc. to specification
** optional equipment: Hot-water boiler, hair dryer, etc.

ABOUT GAMO

Over 40 years of experience in vehicle construction - Profit from our many years of extensive expertise in the field of mobile restroom production and rental. From our own experience, we know exactly what matters and counts.

We produce exclusively in Germany and attach great importance to high quality. This is guaranteed to our customers through the use of high-quality materials and professional sanitary equipment. Each of our trailers are characterized through enormous robustness and practicality. To ensure our customers the acclaimed "added value", we rely on innovative concepts and detailed solutions that make daily work easier.

Feel free to visit us at any of our locations. Our competent experts will gladly showcase the latest sample vehicles.



Our Sales Partners:

Austria:

HUMER
Grünbach 10
4623 Gunskirchen bei Wels

Switzerland:

Tartaruga AG
Gewerbestrasse 1
8451 Kleinandelfingen ZH

Netherlands:

GEDION Aanhangwagens
Martin Luther Kingstraat 36
5653 MG Eindhoven

France:

SARL LOC ET MANUT
19 rue des frères lumière
67201 Eckbolsheim

GAMO Fahrzeugwerke GmbH

SOUTH/WEST

Kanalstrasse 55
88214 Ravensburg

+49 (0) 751 366 11- 0

info@gamo.de

NORTH/EAST

An der Lödlaer Chaussee 4
04617 Lödla / OT Oberlödla

+49 (0) 3447 510 66 - 0

www.gamo.de